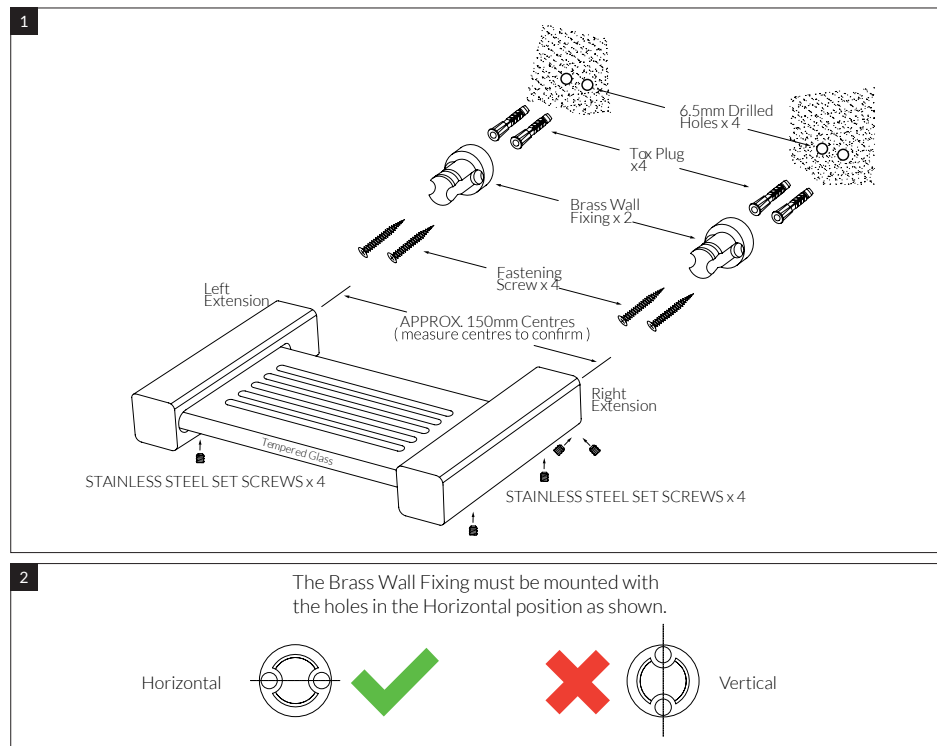


# Suba Soap dish

SUSSEX

## Product code

BSD Soap dish



## Installation guidelines

- The Soap Dish Holder is supplied pre-assembled within its packaging.
- Using the supplied 2mm Allen Key, loosen the Stainless Steel Set Screws and remove the Brass Wall Fixings.
- Prior to drilling mounting holes, measure to confirm the exact centre distance between the Extensions as assembled.
- Choose the desired location for mounting and mark-out measured centres, Add 1 or 2 mm to ensure final fit of Soap Dish Holder.
- Centralize the Brass Wall Fixings onto the marked-out positions and transfer drilling holes.

## Note

- The Brass Wall Fixings must be mounted with the Holes in the Horizontal direction. (see Fig.2)
- Drill 6.5mm holes, fit Tox Plugs and secure the Brass Wall fixings using the Fastening Screws.
- Prior to fitting the Soap Dish Holder, use the supplied 2.5mm Allen key and slightly loose the Stainless Steel Retaining Screws.
- Fit the Soap Dish Holder over the Brass Wall Fixings as a combined assembly. (Glass with Extensions)
- Ensure the Extensions are aligned square and tighten the Stainless Steel Set Screws.
- To complete the installation re-tension the Stainless Steel Retaining Screws to brace the glass shelf.