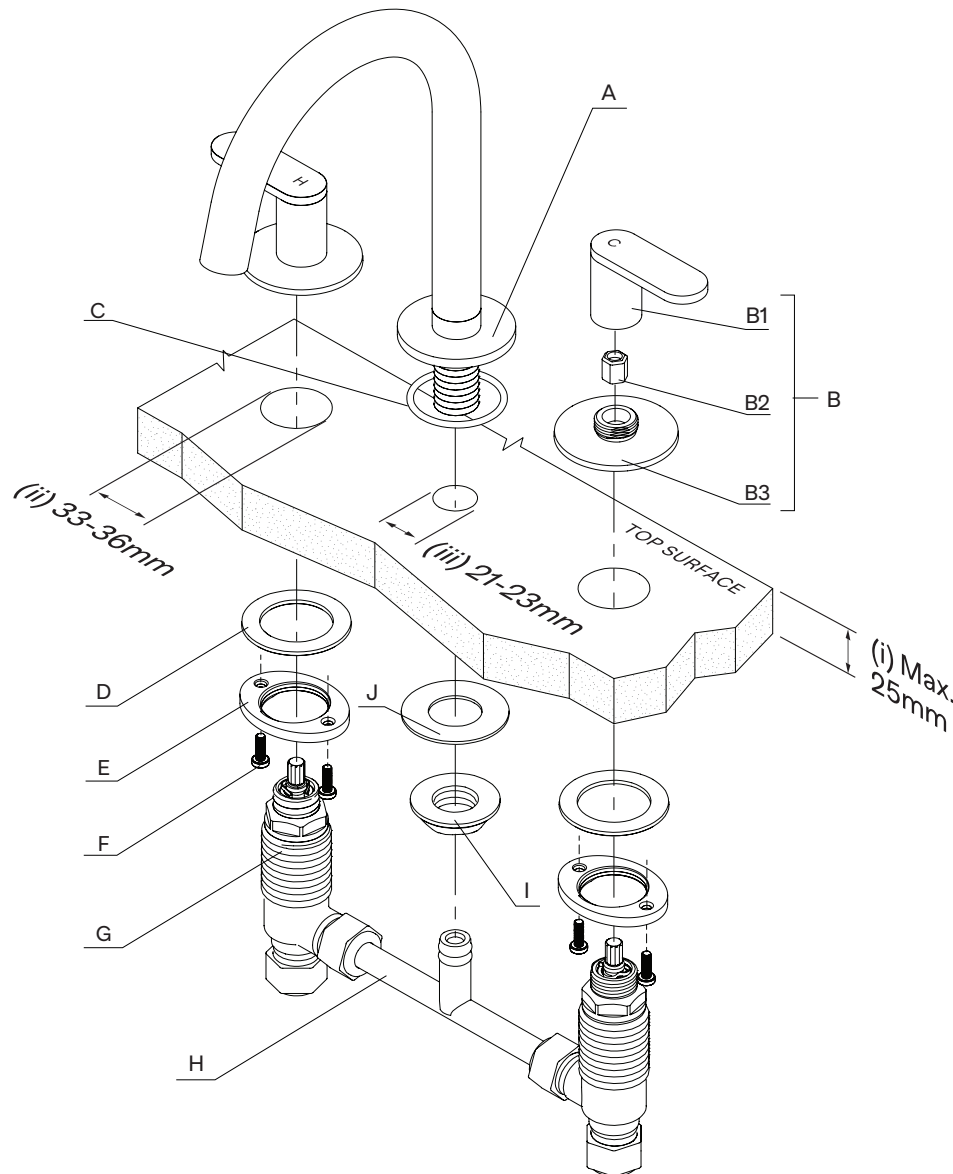


# Duet Basin set

SUSSEX



## Product code

DBS  
DBSHS

## Rough-in:

- Ensure Maximum bench thickness is (i) 25mm.
- Standard Spindles are supplied pre-installed into basin bodies and do not need to be separated.
- Handle holes should be between (ii) 33mm and 36mm diameter to allow for spindle clearance.
- The clearance hole for the outlet should be between (iii) 21mm and 23mm.
- In order to install the basin bodies under the bench, temporarily unscrew the top set of the basin body locknuts (E) and basin body clamping washers (D) and set aside.
- Separate Handle Assembly (B) prior to install.

## Product parts

- (A) Basin Outlet.
- (B) Handle Assembly (consisting of B1 - Handle, B2 - Spindle Adapter and B3 - Dress Ring).
- (C) Outlet O-Ring.
- (D) Basin Body Clamping washer.
- (E) Basin Body Locknut.
- (F) Phillips Head Screw.
- (G) Basin Body Assembly
- (H) Tee-piece.
- (I) Outlet Locknut
- (J) Outlet Clamping Washer

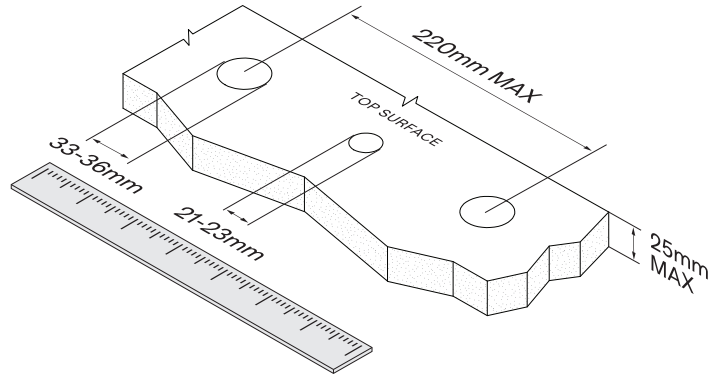
## Plumber note

- Tapware is to be installed by a Licensed Plumber in accordance with AS/NZS 3500:2021
- Recommended working water pressure 300 - 500 Kpa. Maximum water temperature is 65°C
- After installation, ensure that tapware functions correctly without leaks.
- Please ensure a copy of the Installation Instructions are left with the end user for future reference.

# FIT OFF

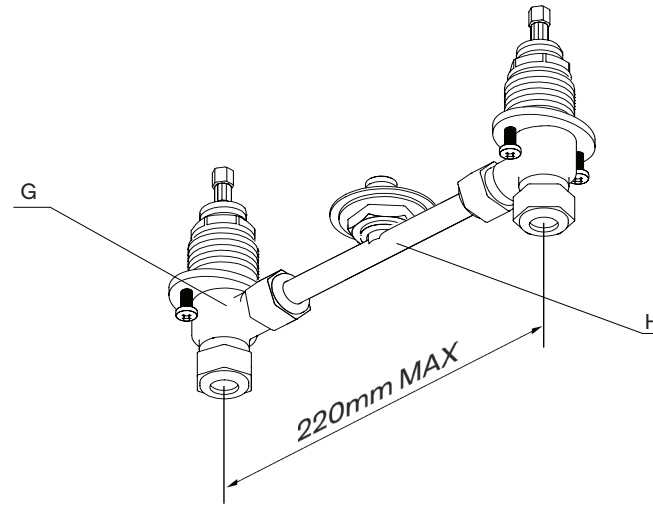
## Step 1

Measure the bench top thickness and the distance between tap centres. Maximum bench thickness is 25mm and the maximum distance between tap centres is 220mm.



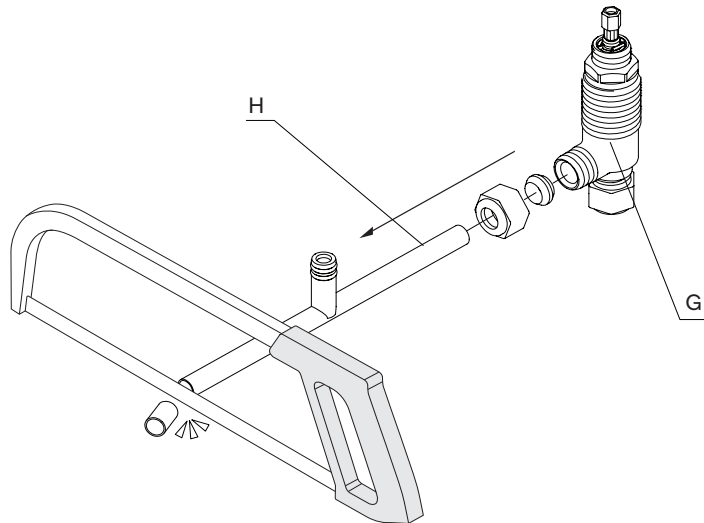
## Step 2

- Loosely connect Tee-piece (H) to the hot/cold Basin Bodies (G)
- Measure distance between the centre of the Basin Bodies (G)



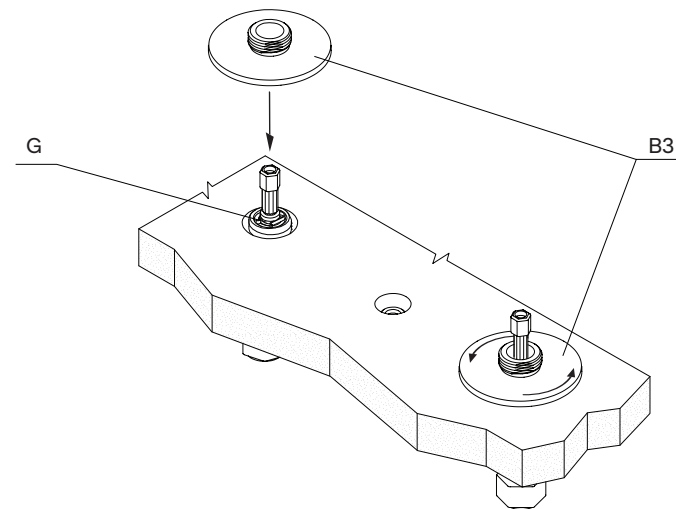
## Step 3

Cut the Tee-piece (H) to the correct size if required and affix Basin Body (G) on either side using supplied locknuts. If an extension is required, contact the suppliers.



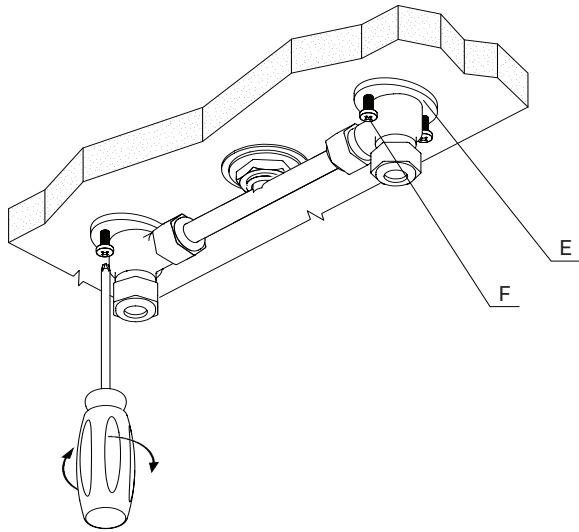
## Step 4

On the top of the counter, screw the Dress Rings (B3) onto the spindle locknuts. Fit the dress ring and ensure it meets the top surface.



### Step 5

Below the counter, secure the assembly by tightening the clamp Screws (F) using a Screwdriver.

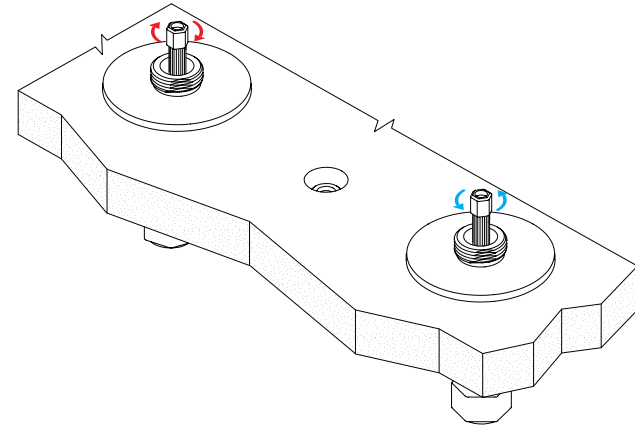


### Step 6

When secure, ensure both spindles are set to the OFF position:

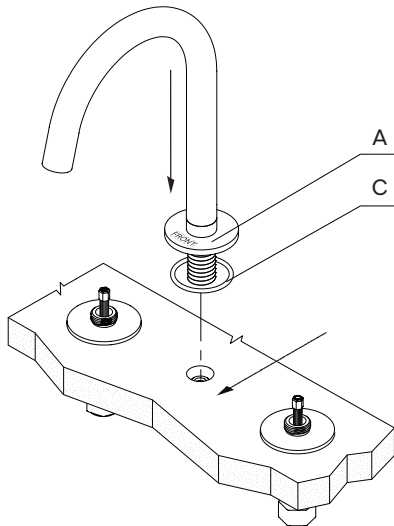
**HOT = FULL TURN CLOCKWISE.**

**COLD = FULL TURN ANTICLOCKWISE.**



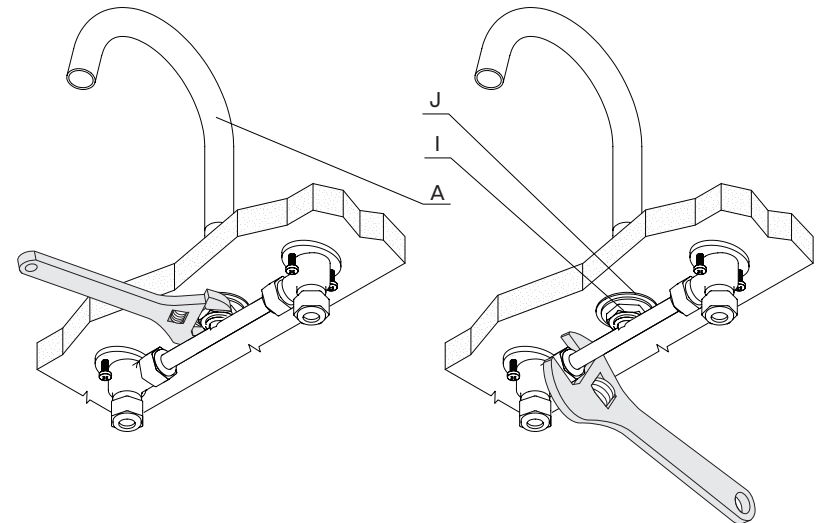
### Step 7

Fit Basin Outlet (A) through the O-Ring (C) and the mounting surface, ensure the O-Ring (C) is intact. Note 'FRONT' label, arrange the flange (A) so the 'FRONT' label faces the basin.



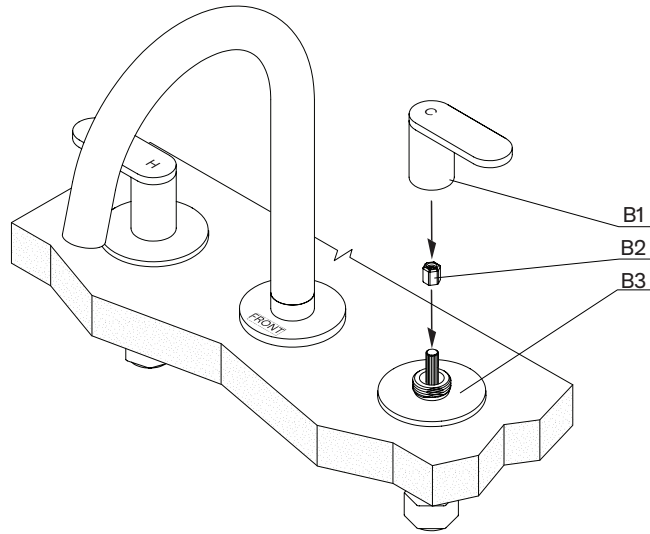
### Step 8

Secure the Outlet (A) below the countertop by tightening the Outlet locknut (I) onto the Outlet Clamping Washer (J) with a spanner. Tighten basin body nuts to secure the breach.



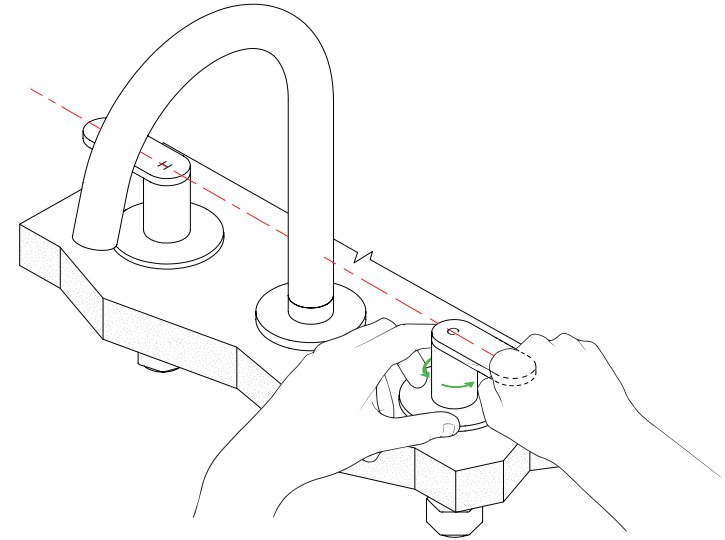
### Step 9

The Handle Assembly (B) has 3 parts and is assembled in the demonstrated configuration.



### Step 10

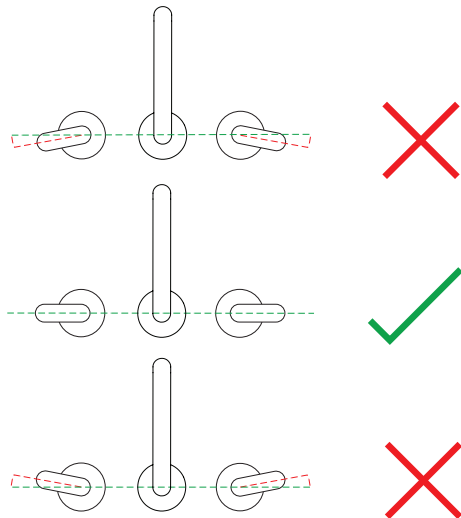
The Spindle Adapter (B2) will engage first, then rotate the barrel of the handle to meet the Dress Ring (B3), Tighten by hand only. See "FINE-TUNING HANDLE ALIGNMENT" for further instructions.



## Fine-tuning Handle Alignment

### Step 11

The handle must be affixed as shown with the standard "off" position in horizontal alignment.



### Step 12

If the handle alignment requires adjustment, remove the Handle (B1) and Spindle Adapter (B2). Rotate (B2) to engage a different position on the spindle and refit. Repeat steps 10 and 12 until you reach alignment.

